

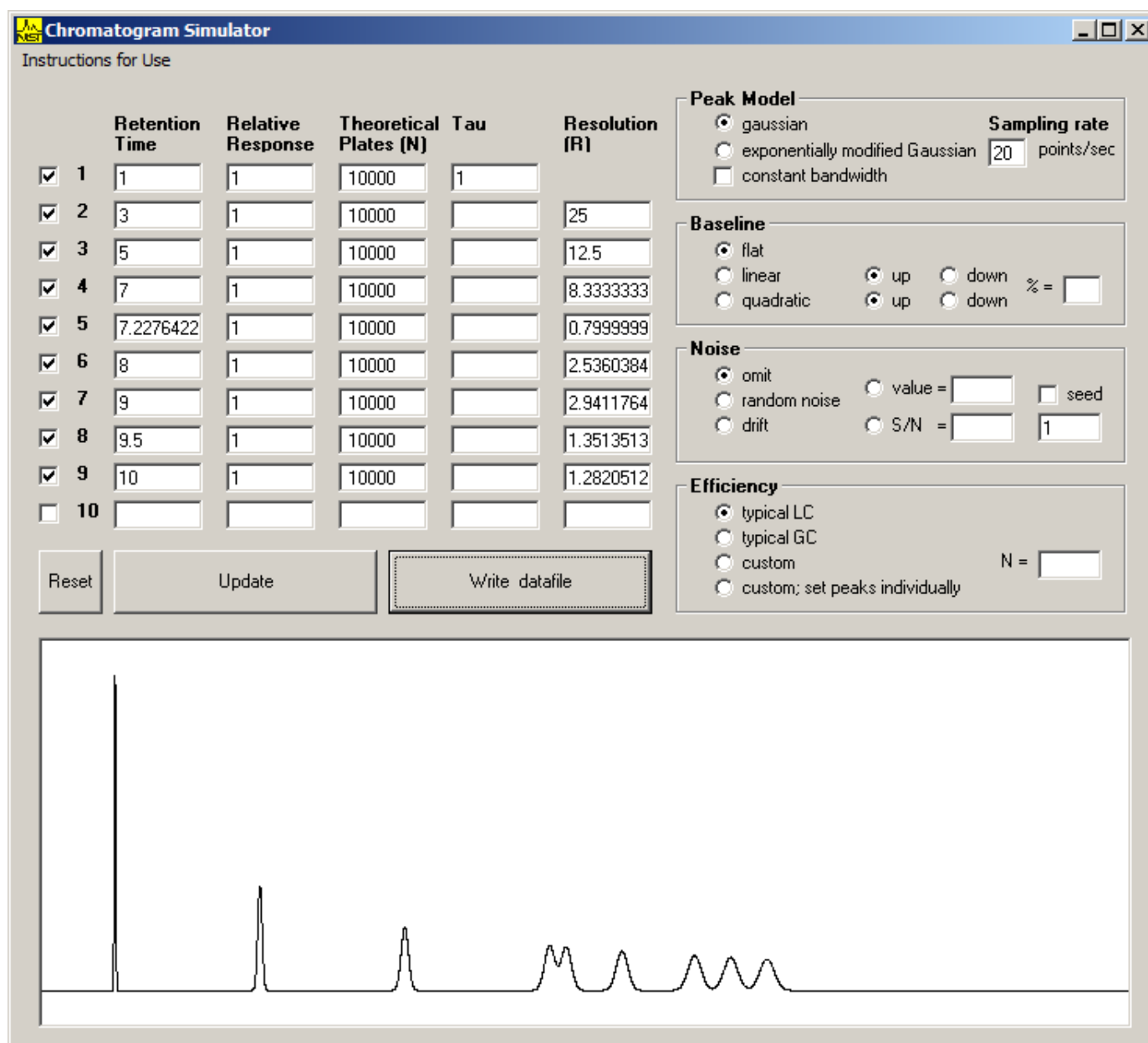
Sample Set 2

Files in this set were generated using retention times and peak areas listed in the tables below. Some components are only partially resolved. Simulations were generated using a sampling rate of 20 points/sec and efficiency of N= 10000. No noise or baseline treatments were applied.

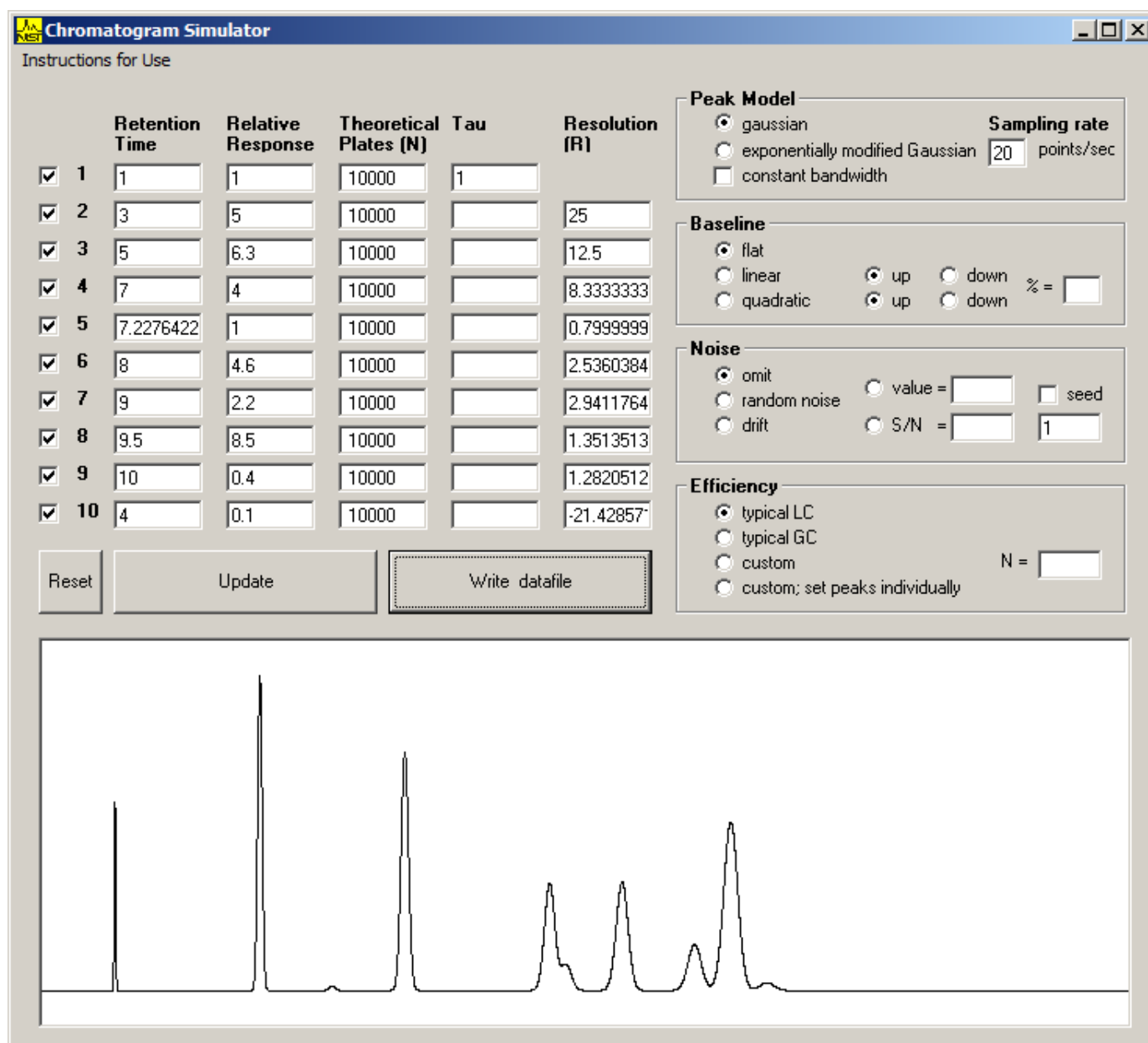
Component and Sample Identification

Peak ID	Time	sample 11	sample 12	sample 13	sample 14	sample 15	sample 16	sample 17	sample 18	sample 19	sample 20
	min	area	area	area	area	area	area	area	area	area	area
IS	1	1	1	1	1	1	1	1	1	1	1
peak 2	2	1				0.7	0.1	0.07		0.04	
peak 3	3	1	5	3.7	7.3	3.4	0.4	1.3	1.5		1.9
peak 4	4		0.1	0.4	3.2				0.01	22.5	1.8
peak 5	5	1	6.3	3.5	7.7		0.1		63	23	0.7
peak 6	6					2.1		0.03			2.1
peak 7	7	1	4	0.7	0.6	4.2	2.4	6.1	3	0.1	0.5
peak 7a	7.23	1	1	1	7.4	2.1	8.3	1.8	5.2	1.1	8.9
peak 8	8	1	4.6	4.6	2.9	5.2	4	2.2	3.1	2.1	
peak 9	9	1	2.2	0.2	5.3	2.1	9.5	4.3	0.3	108	0.1
peak 9a	9.5	1	8.5	5.3	1.1	8.3	0.5	0.05	0.9	2.1	0.2
peak 10	10	1	0.4	8	9.9	4.8	1.3	8.1	2.1	2.1	0.3

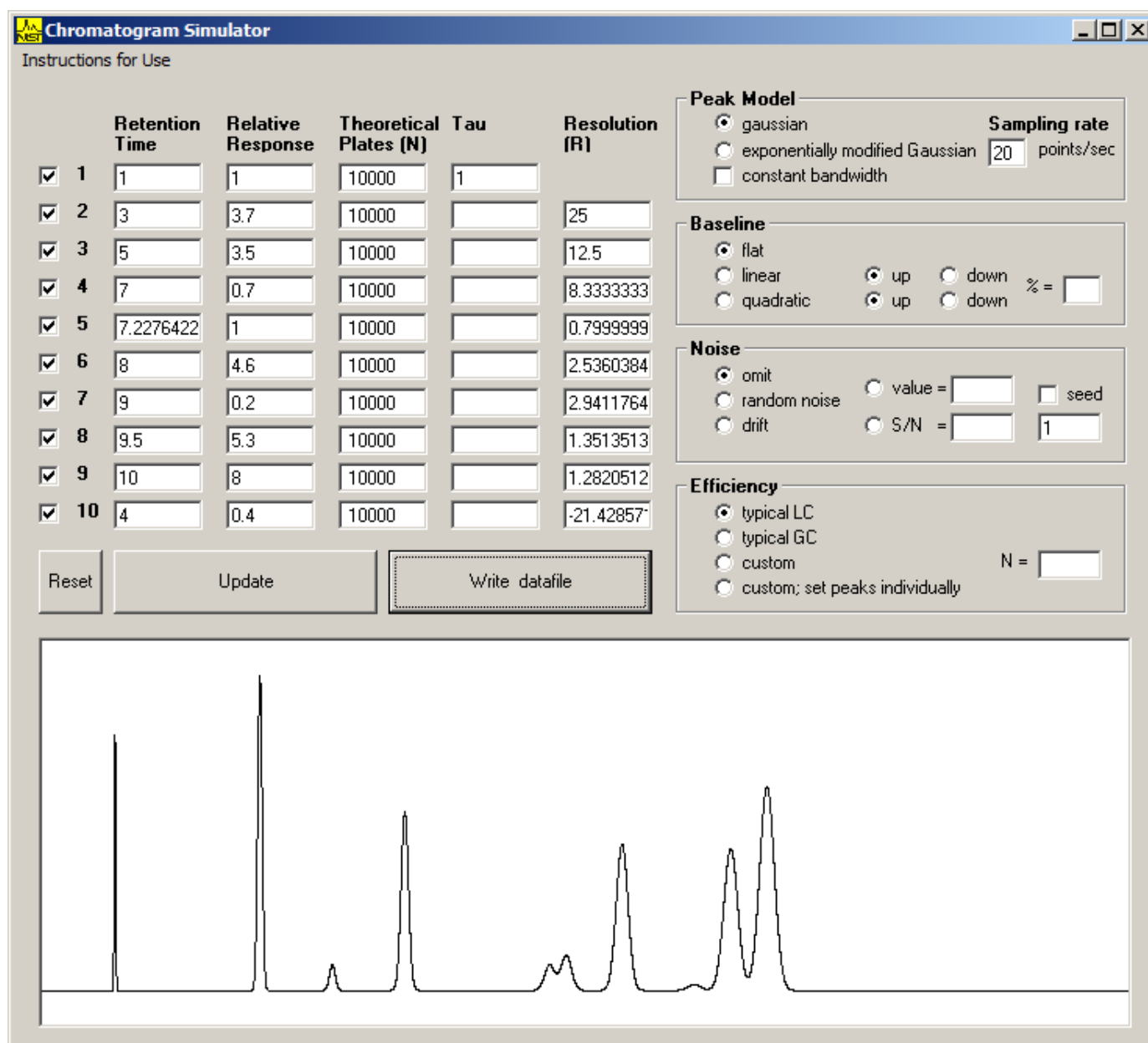
Sample 11



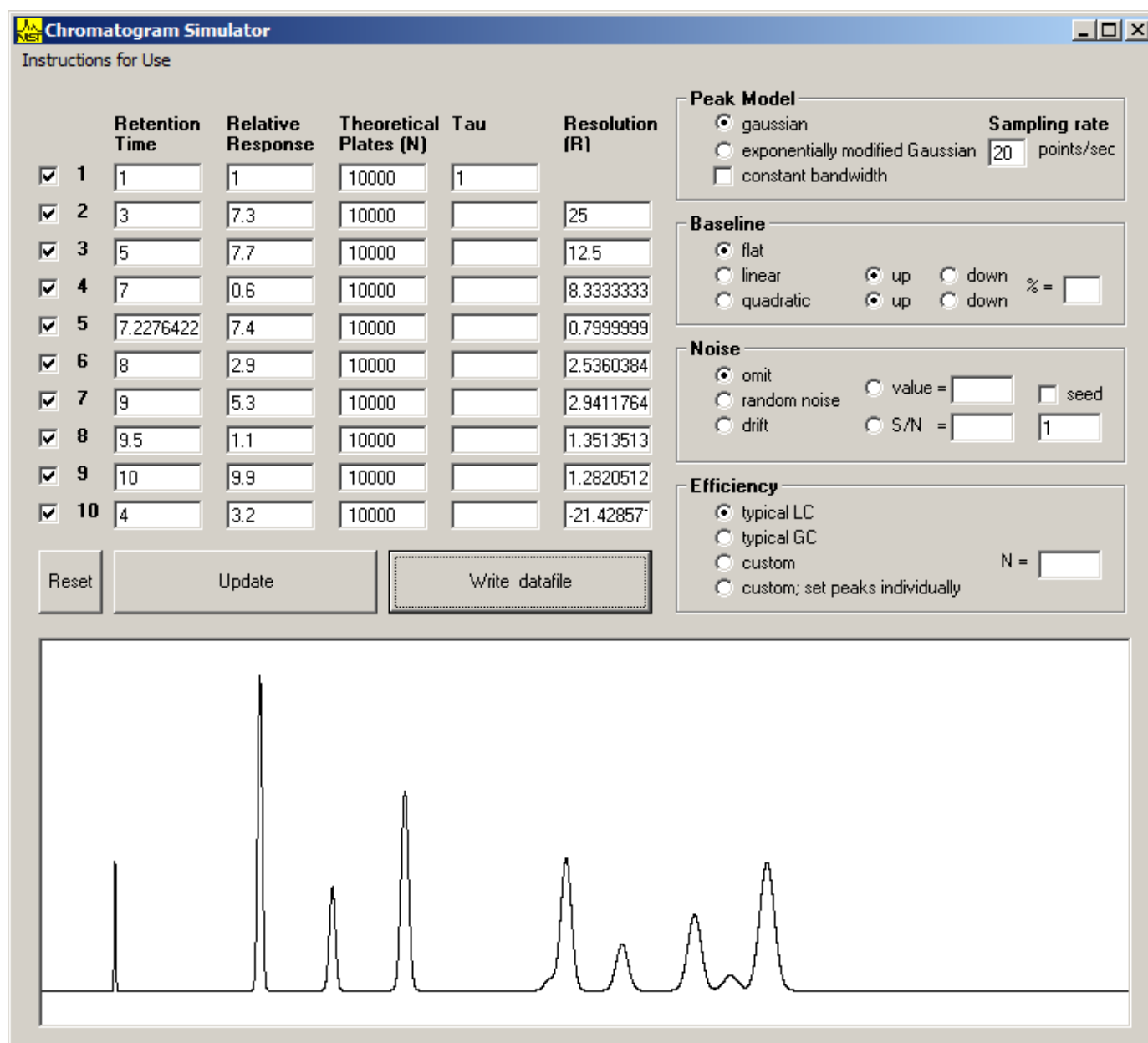
Sample 12



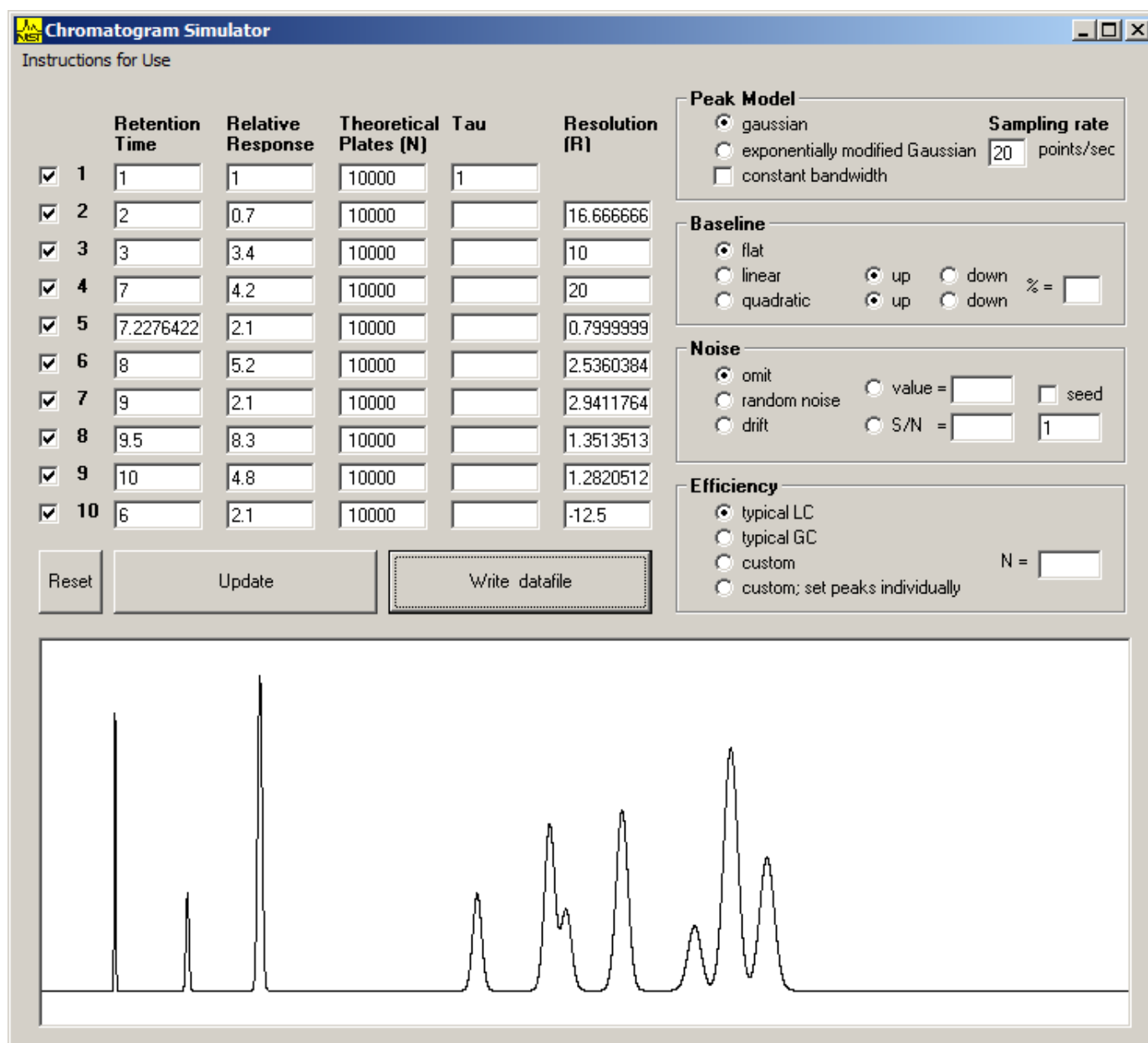
Sample 13



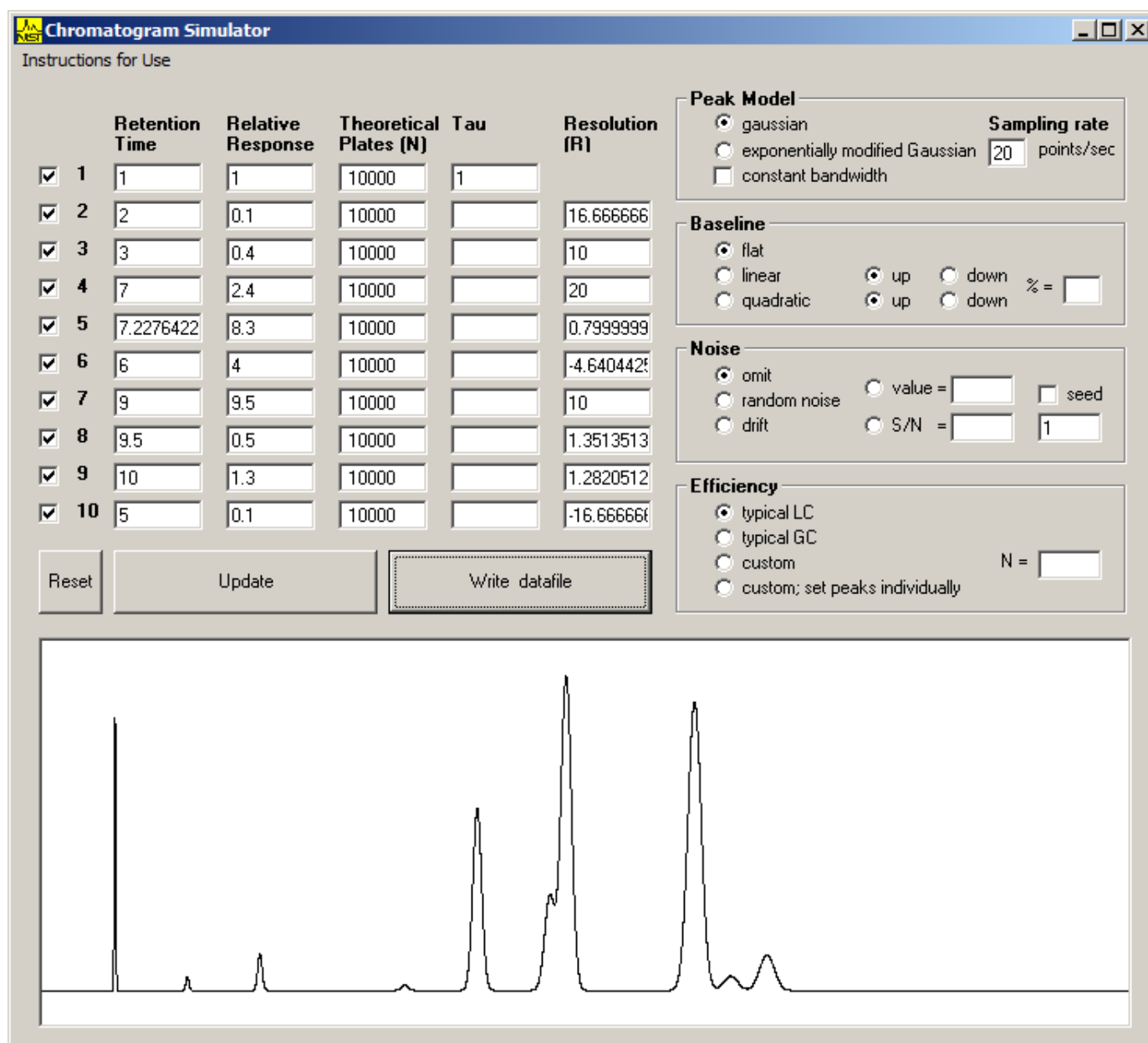
Sample 14



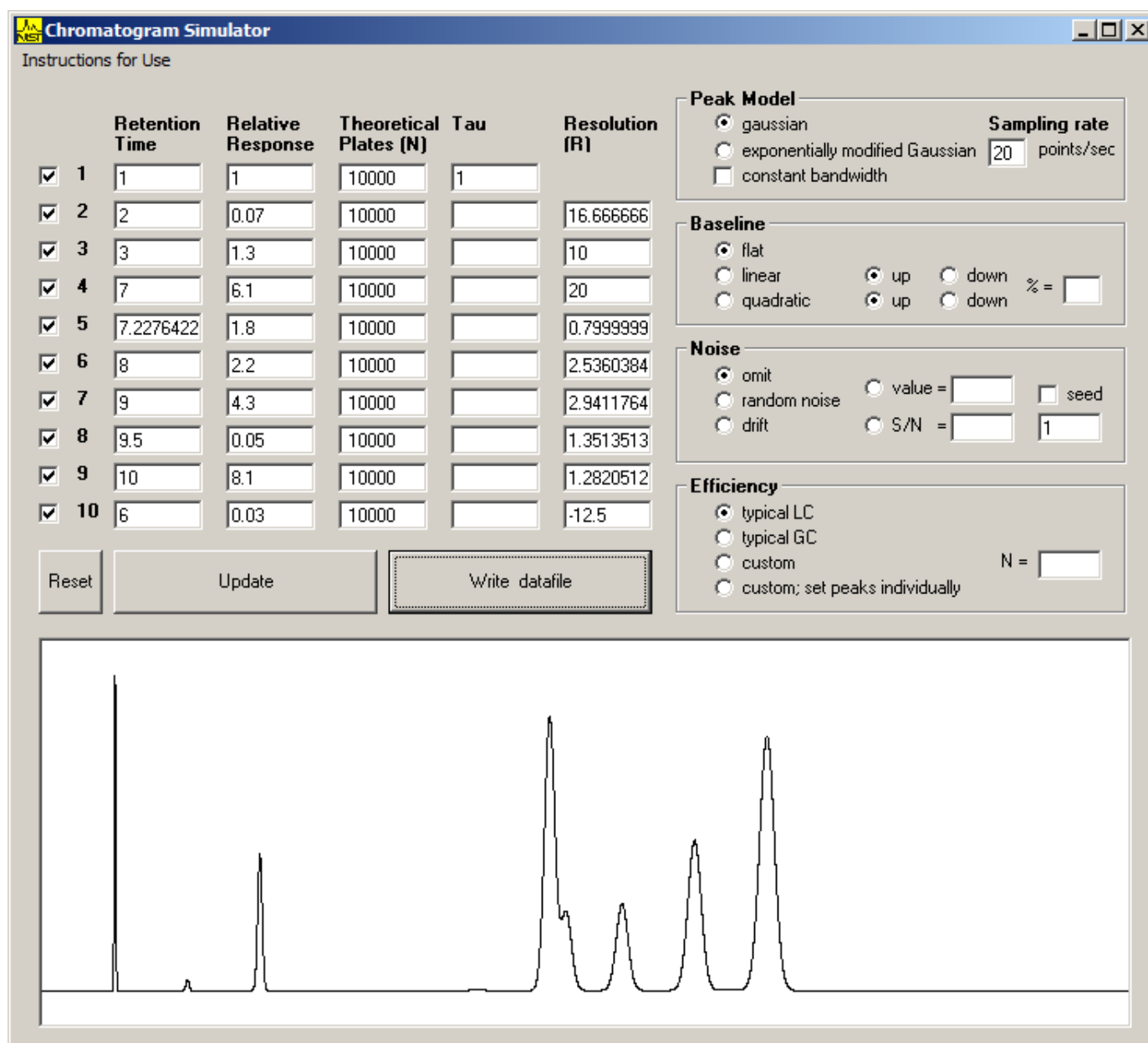
Sample 15



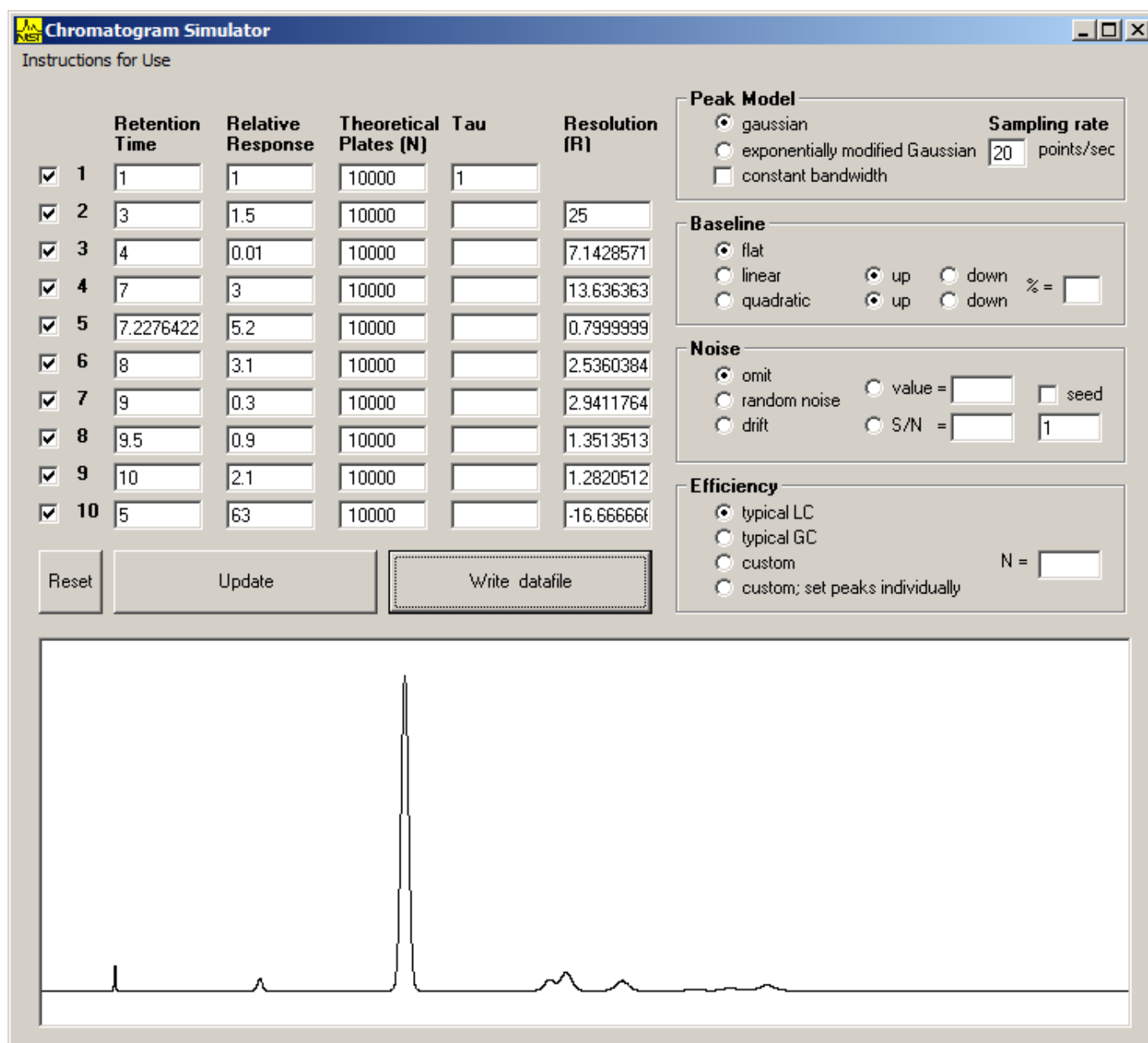
Sample 16



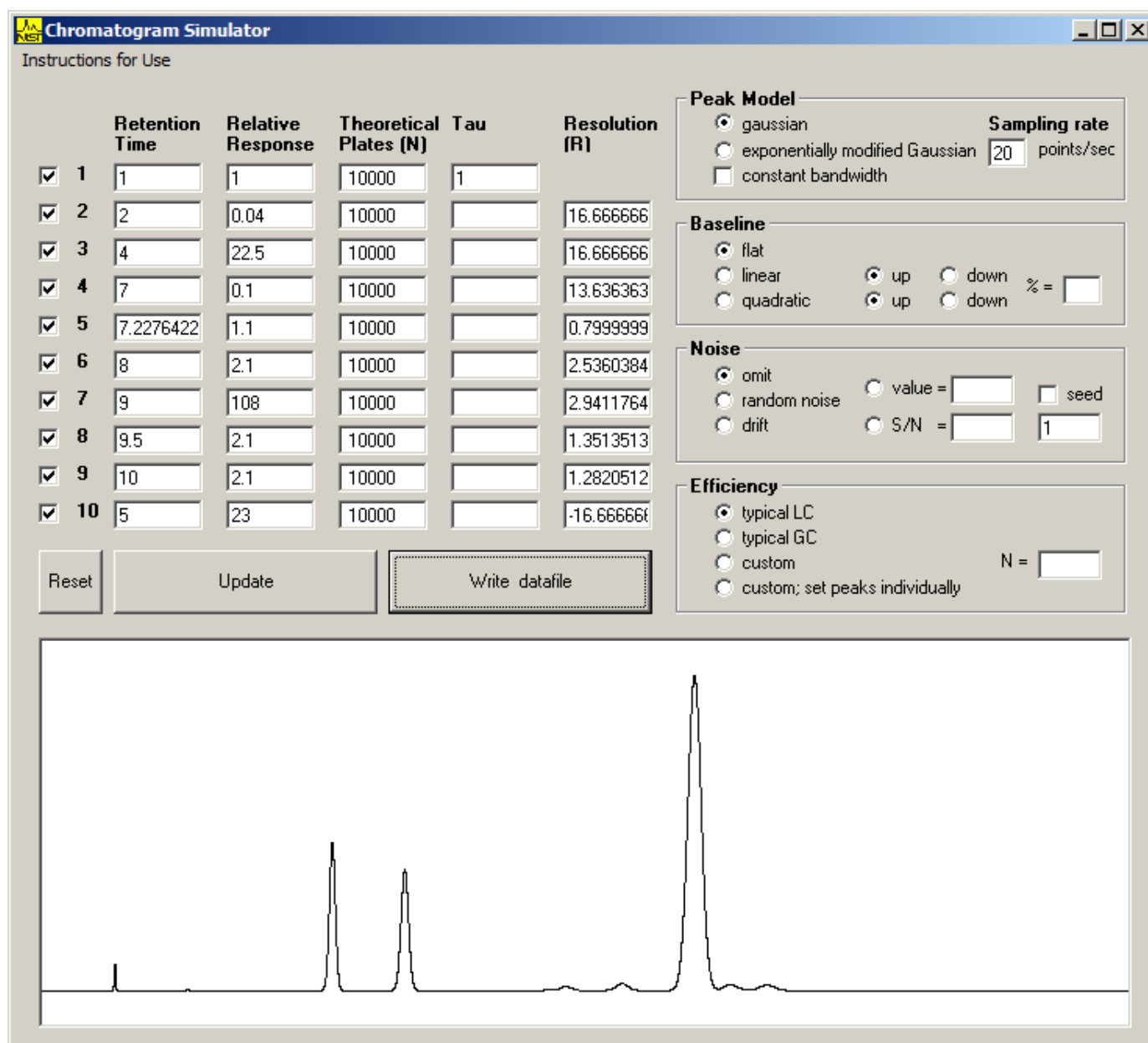
Sample 17



Sample 18



Sample 19



Sample 20

